

# **Block 4: Managing Urban Transport infrastructures**

## **2. Managing the urban transportation system**

Prof. Matthias Finger

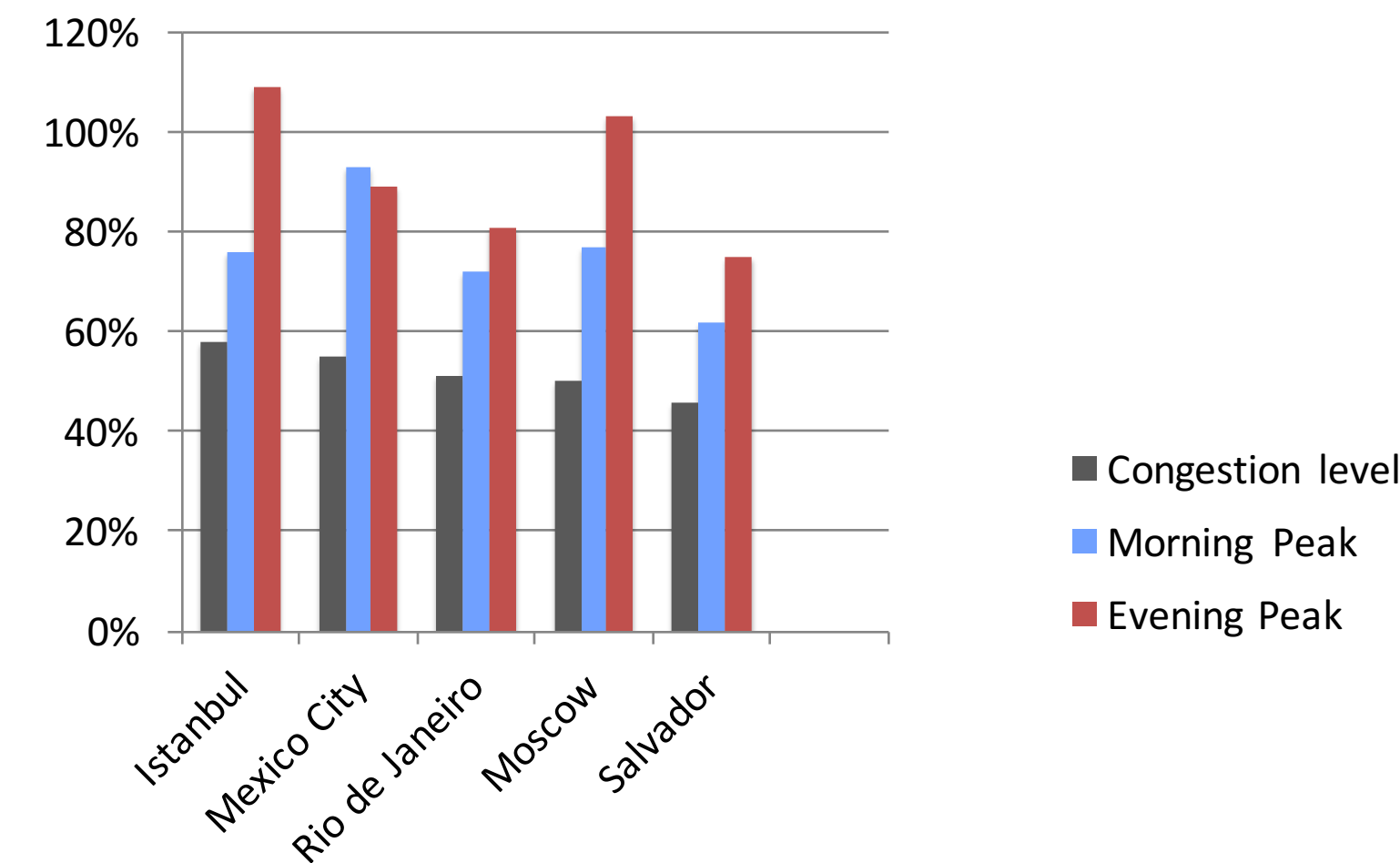
This section will introduce the main features of urban transportation management

I will answer the following questions:

- What are the main performance dimensions of urban transportation systems?
- How are the different transport modes managed?
- Who is in charge of urban mobility?

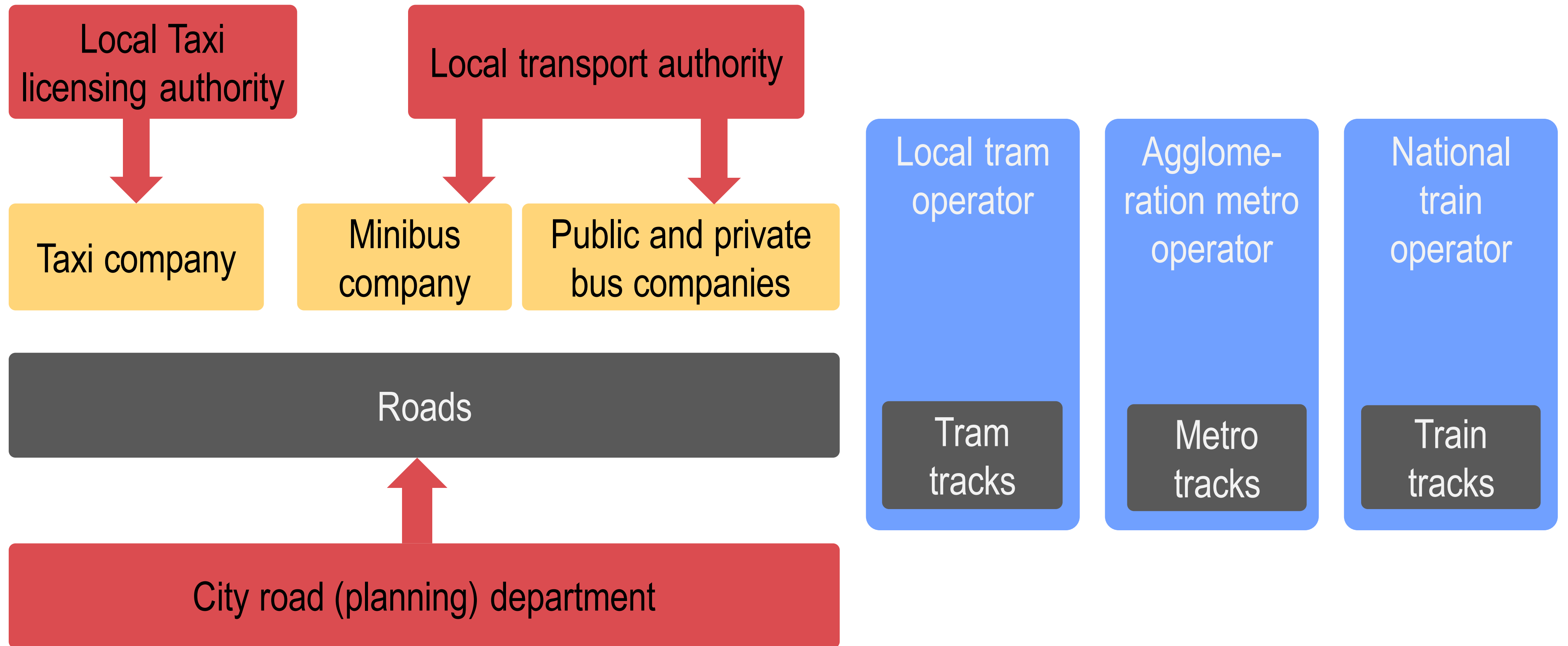
# The main performance dimensions

- The time people spend while moving from one place to another in cities is a central performance indicator (efficiency). This time is notably a function of:
  - Congestion
  - Intermodality (i.e., connections across transport modes)
- Another important indicator is energy consumption (transport represents approx. 30% of global energy consumption) and pollution (cities are responsible for approx. 25% of transport-related CO2 emissions)
- Along with transportation costs  
**we need some broad figures about costs, investments, subsidies**
- Performance of urban transportation systems (their efficiency) is a direct result of their management, so how is this done?

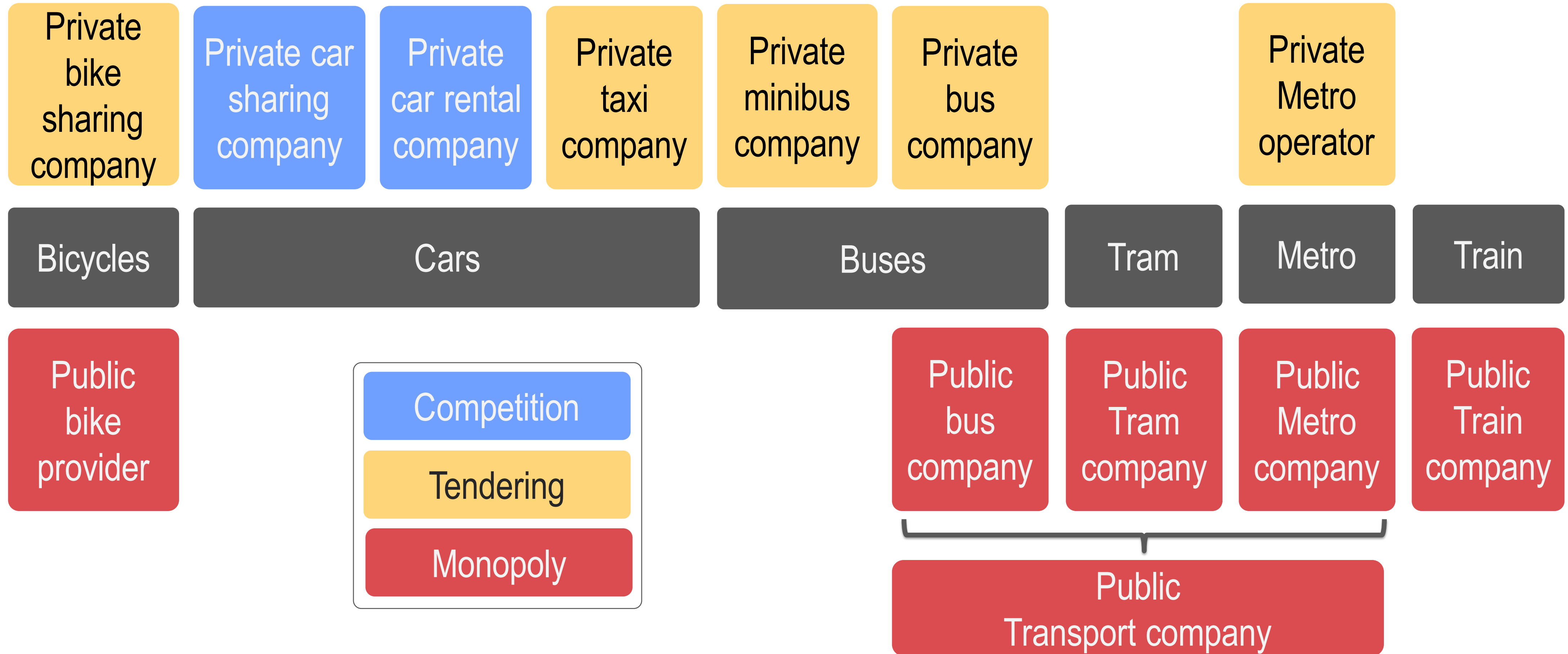


What does this say???

# Transportation modes and their management



# Who is in charge?



# Conclusion

- In this session, we have seen how fragmented and uncoordinated the urban transportation system is
- Who can make urban transport more efficient?
- Who can speak for the mobility needs of the urban transport customer?
- In the next session, we will hear from an expert
- And in the session thereafter from a CEO of an urban bus operator